

ClassroomAPP

THE EDTECH
AWARDS



COOL TOOL
FINALIST 2019

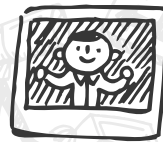
All tools to teach at *any distance*
in **One Single App**



Single Sign-on



Teach



Video Conference



Student Control



Data Security



Parents



K12 Content
English / Spanish



Attendance



Standards



Testing



Reports



LMS



Project Based
Learning



Distance / Hybrid
Learning



District assets
friendly



Collaboration

Distance / Hybrid Learning

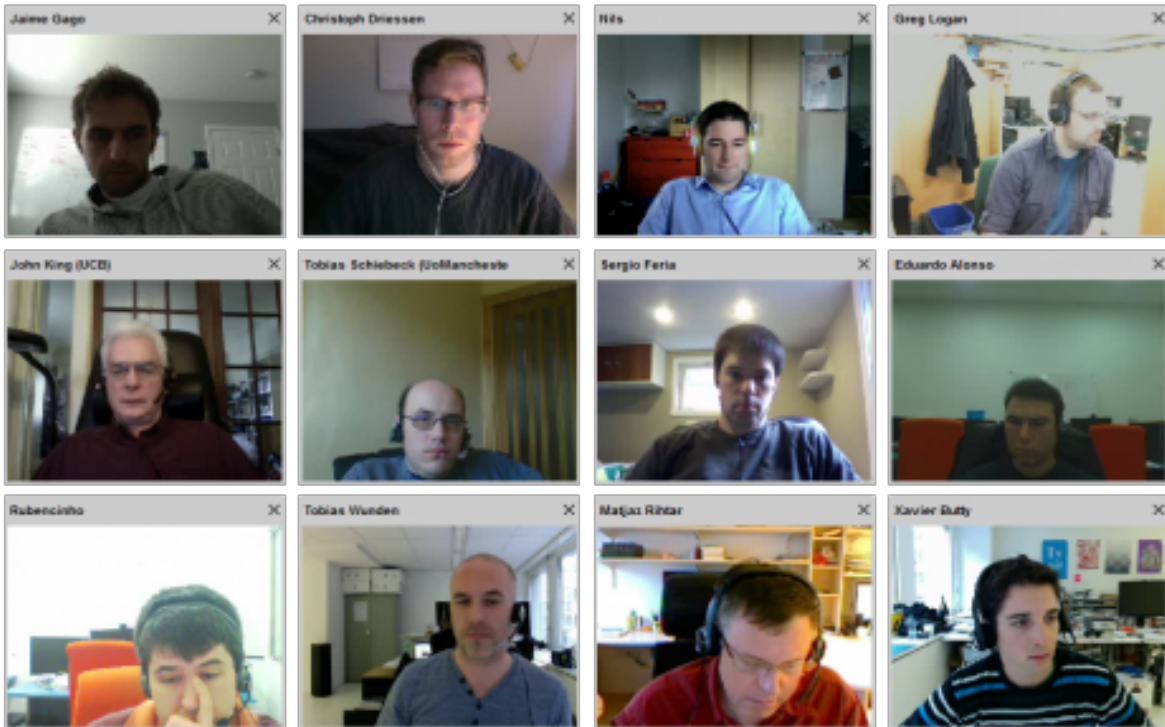


Secure video conferencing
built-in to the application



Student sign-on
automatically (SSO)

... start teaching
right away!

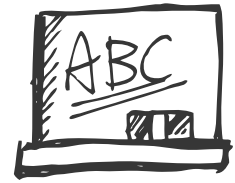


Monitor & control
student screens



Automated attendance,
proctoring & participation

All tools in one place!



Sign in only once &
access all your apps & content



Tests ...



Reports



Edit Word, Excel, PPT
with built-in editor



All your teaching tools in one place ...
Like Your Swiss-Army knife

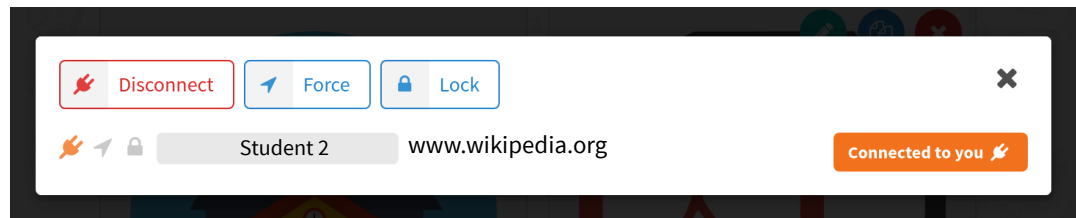
Live view at any distance



Easy-to-use dashboard
gives teachers full control



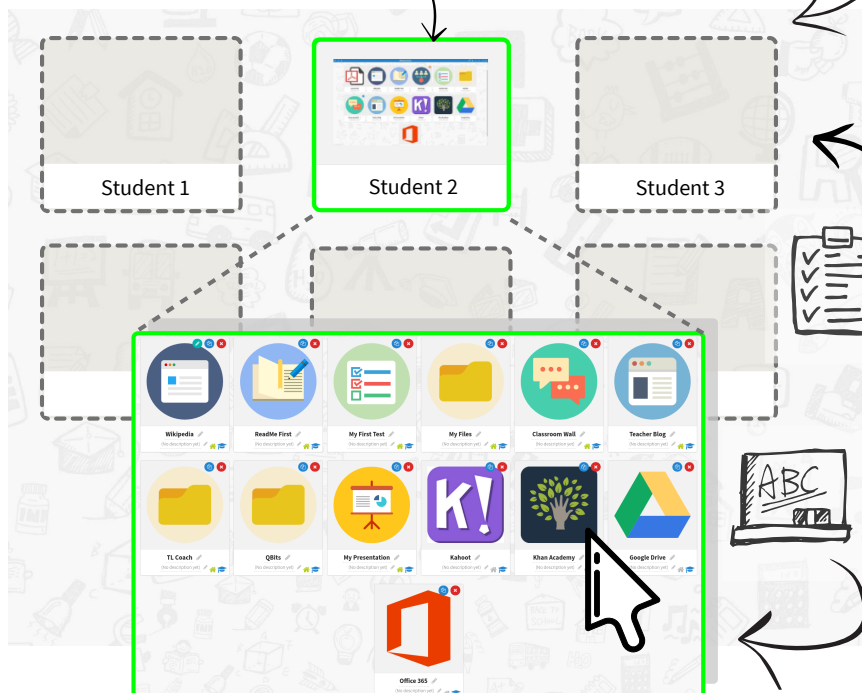
Real-time
reporting



Live view & control
i.e. locked screens
on instruction



Proctor tests
remotely



Take attendance
any time



Click & lock
student screens

Student Performance



Data secured in a vault,
with reports & analytics

Filter by grades
... campuses
... dates
... standards

Filters

Student

Start January 1, 2018

End March 24, 2018

5 x

Middle School x

STANDARD1 x

Jermaine Harrison x

Go

... courses or instructors

Full Name	Week #5	Week #6	Week #7	Week #8	Week #9
Johnette Beckley	50 %	34 %	78 %	100 %	60 %
Kate Bennet	0 %	53 %	30 %	38 %	35 %
Camie Berard	0 %	23 %	47 %	100 %	55 %
Prudence Bermea	0 %	0 %	80 %	57 %	80 %
Shelba Blaylock	85 %	100 %	69 %	57 %	43 %
Melania Bolinger	17 %	38 %	38 %	50 %	50 %



Standards-driven instruction
Student personalization

Analytics & Metrics



Complete visibility
on asset usage

Content	Visits	Total (hours)	Average (minutes)
ck12.org	1527	422	17
oercommons.com	1522	414	16
pearson.com	1460	412	17
mgh.com	1444	408	17
thinkcentral.com	1459	408	17
wikipedia.org	1455	404	17



What are the MOST
effective resources?

Content	Standard	Students	Correlation	ROI
Publisher A	STANDARD1	520	+22%	7.51 %/\$
Publisher B	STANDARD1	347	+6 %	+1.13 %/\$
Publisher C	STANDARD1	120	+4 %	+0.75 %/\$
Publisher D	STANDARD1	215	+3 %	+0.56 %/\$
Publisher E	STANDARD1	412	-3 %	-0.57 %/\$
Publisher F	STANDARD1	136	-17%	-6.76 %/\$

Measure impact of
paid and free resources

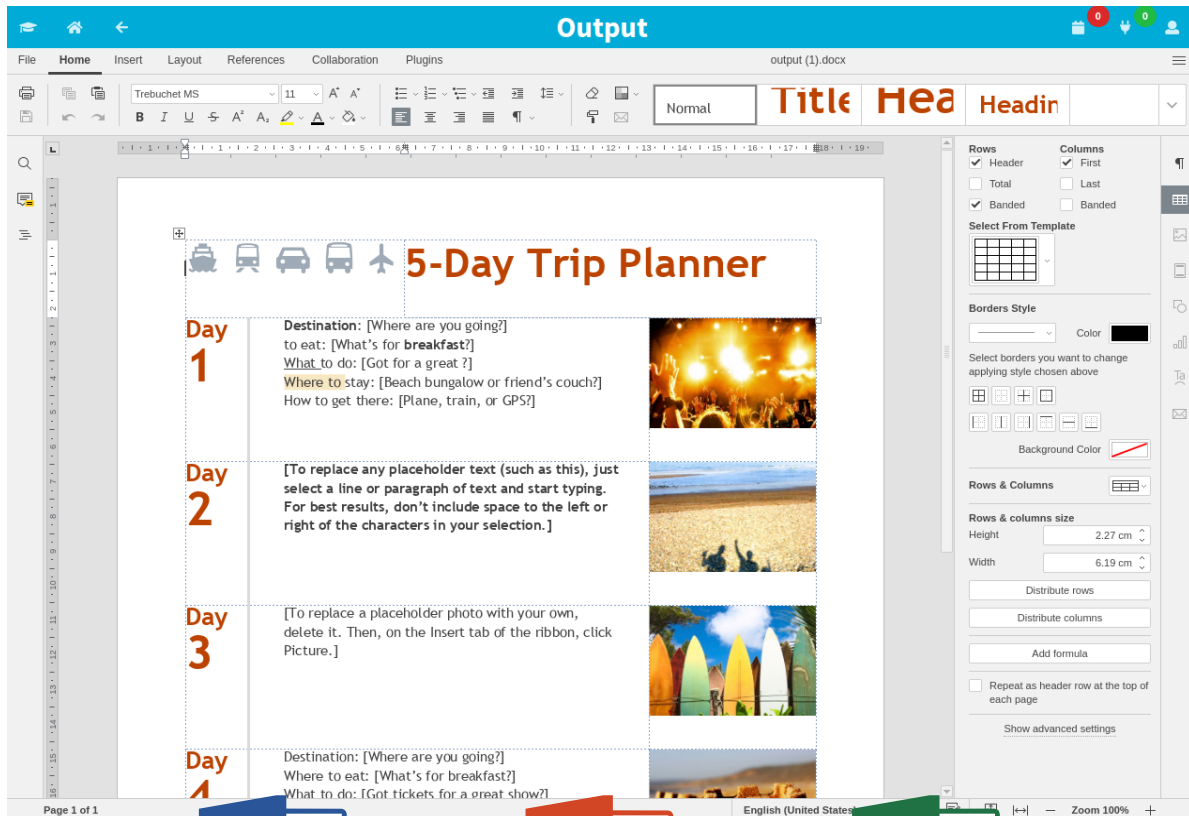
Docs & Collaboration



Create your own resources

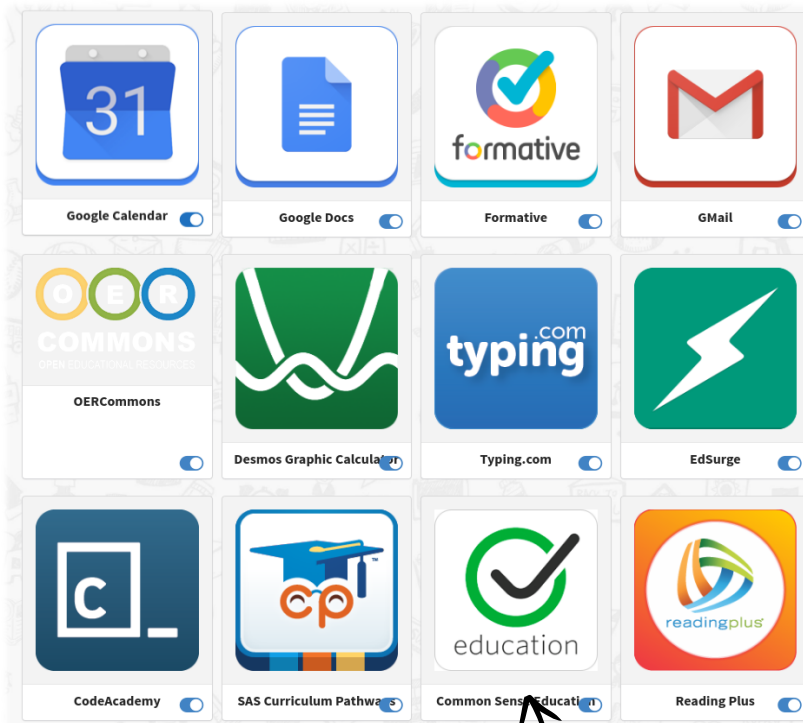
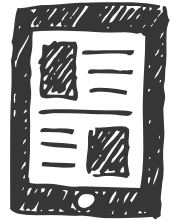


Students submit assignments & reports with no extra apps



Built-in real-time document editing and collaboration

Apps & Single Sign-on




All content & apps
open with SSO



All SSO protocols
in education today

Welcome back ...

[Log In with Clever](#) [Sign In with Google](#) 

ClassroomAPP login

[Badge Login](#)

Login

Password

☐ Save my information

[Submit](#)

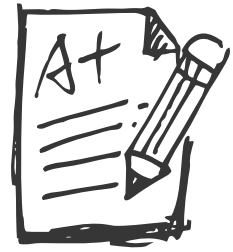
or SIS integration

Badge & face
logins



No wasting time ... launch
ClassroomAPP & start teaching

Testing & Standards



#1

Multiple Choice

A first question to illustrate multiple choice questions

☒ True **10 Points**

☒ False **0 Points**



Standards
CCSS, FL Sunshine, TEKS etc.

Standards & Tags

Standards & Tags

#2

Recording

Please record what you learned from

- ☐ File
- ☐ GoogleDrive
- ☐ Dropbox
- ☐ OneDrive
- ☐ Camera
- ☒ Audio

Multiple-choice, text input, fill-in
drag & drop, order & even audio recording!



Teacher feedback in
text or audio



Reports by student,
standards, question etc.

Summary Student Questions Standards & Tags

Multiple Choice

Recording

Text Input

Total

Sample User (Student)

10 (100%)

10 (100%)

audio-11:23:37AM.mp3

5 (50%)

25 (83%)

Select chart

- ☒ Students Passing
- ☐ Grades Quartile Distribution
- ☐ Grades Quintile Distribution
- ☐ Questions Answered

Students Passing Students Failing



Real-time correction
& charts

Digitize your paper tests!
Integrate existing questions

Parents



Parents can view all student assignments and monitor performance & attendance

Communicate important messages

A screenshot of a web interface showing a dialog box titled "Send Message to ALL parents" with a close button (X) in the top right corner. Inside the dialog, there is a text input field containing the text "Field trip on Monday cancelled". Below the input field is a blue button with a white envelope icon and the text "Send Message".

.... or chat with parents directly

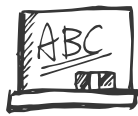
A screenshot of a chat interface. It shows a list of messages. The first message is from a "Teacher" sent "About 3 day(s) ago" with a rating of four stars and a "Parent" status with a green checkmark. The second message is also from a "Teacher" sent "About 1 month(s) ago" with the text "Reminder of parent teacher meeting tomorrow" and a "Parent" status with a green checkmark. The third message is from a "Parent" sent "About 2 day(s) ago" with the text "When is the next meeting?". Below the messages is a text input field containing the text "The meeting was moved to next Tuesday" and a blue "Send Message" button.

Real-time read notifications

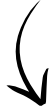


Full parental control on browsing and device use at-home

Secure Access & Browsing



Real-time filtering
at any distance

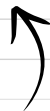


Classroom Firewall

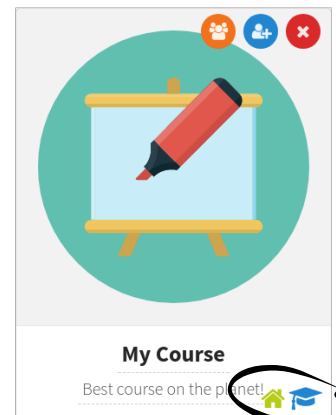
Please select the categories to block in your students' browsers.

Note: Students need to be connected to your classroom for filters to take effect.

<input type="checkbox"/>	Abortion
<input type="checkbox"/>	Alcohol
<input type="checkbox"/>	Astronomy
<input type="checkbox"/>	Astrology
<input type="checkbox"/>	Auctions
<input type="checkbox"/>	Banking
<input type="checkbox"/>	Bikes
<input type="checkbox"/>	Boats



Malicious, x-rated, viruses etc.
filtered by default



Disable content real-time
for students or parents



The most secure learning platform
on the planet! With centralized
real-time monitoring and controls.

Inquiries

Tel: +1-833-CLSSRM1 (+1-833-257-7761)
info@classroomapp.com
http://www.classroomapp.com

ClassroomAPP Inc.
16192 Coastal Highway, Lewes, DE 19958

THE EDTECH
AWARDS



COOL TOOL
FINALIST 2019



Single Sign-on
Log in once and start teaching right away



Security
Military-grade protection of student profile & data



Teach
Full-fledged award-winning LMS



Content
Best-in class standards-linked content built-in



Reports
Complete & secure data vault with advanced analytics



Distance / Hybrid Learning
Built-in secure audio & video conferencing



Testing
Complete & easy-to-use testing engine & questions bank



Parents
Streamlined communication & access to student work



Classroom Control
Real-time control over student screens at any distance



Attendance
Automated attendance & participation



Collaboration
Real-time document editing & collaboration

All rights reserved. No part of this document may be reproduced or transmitted in any form or by any means, electronic, mechanical, photocopying, recording, or otherwise, without prior written permission of ClassroomAPP Inc.

All ClassroomAPP Inc. product names, whether or not appearing in large print or with a trademark symbol, are trademarks of ClassroomAPP Inc., its affiliates, related companies or its licensors or joint venture partners.

Mac, iPad, iPhone, iPod are trademarks of Apple Inc. App Store is a service mark of Apple Inc. Microsoft Word and Microsoft Excel are trademarks of Microsoft Inc. Android and Google Play are trademarks of Google Inc. All other trademarks including those in chart above are properties of their respective companies and are hereby acknowledged.